

Street Naming and Numbering (25/00023/NEWDEV) July 2025

LSI Ref | 22216-LSI-FSD-ZZ-M3-A-003_Farmstead Drive_Site
 22216 Model_AC23
 The copyright of the design remains with LSI Architects (Design) Ltd and may not be reproduced without their prior written consent.
 All dimensions are to be checked on site and the Contract Administrator notified of any discrepancies.
 Drawing to be read in conjunction with the project specification
 Do not scale from this drawing for Constructional purposes

Residential Unit Type

- 1B2P
- 2B3P
- 2B4P
- 3B4P
- 3B5P

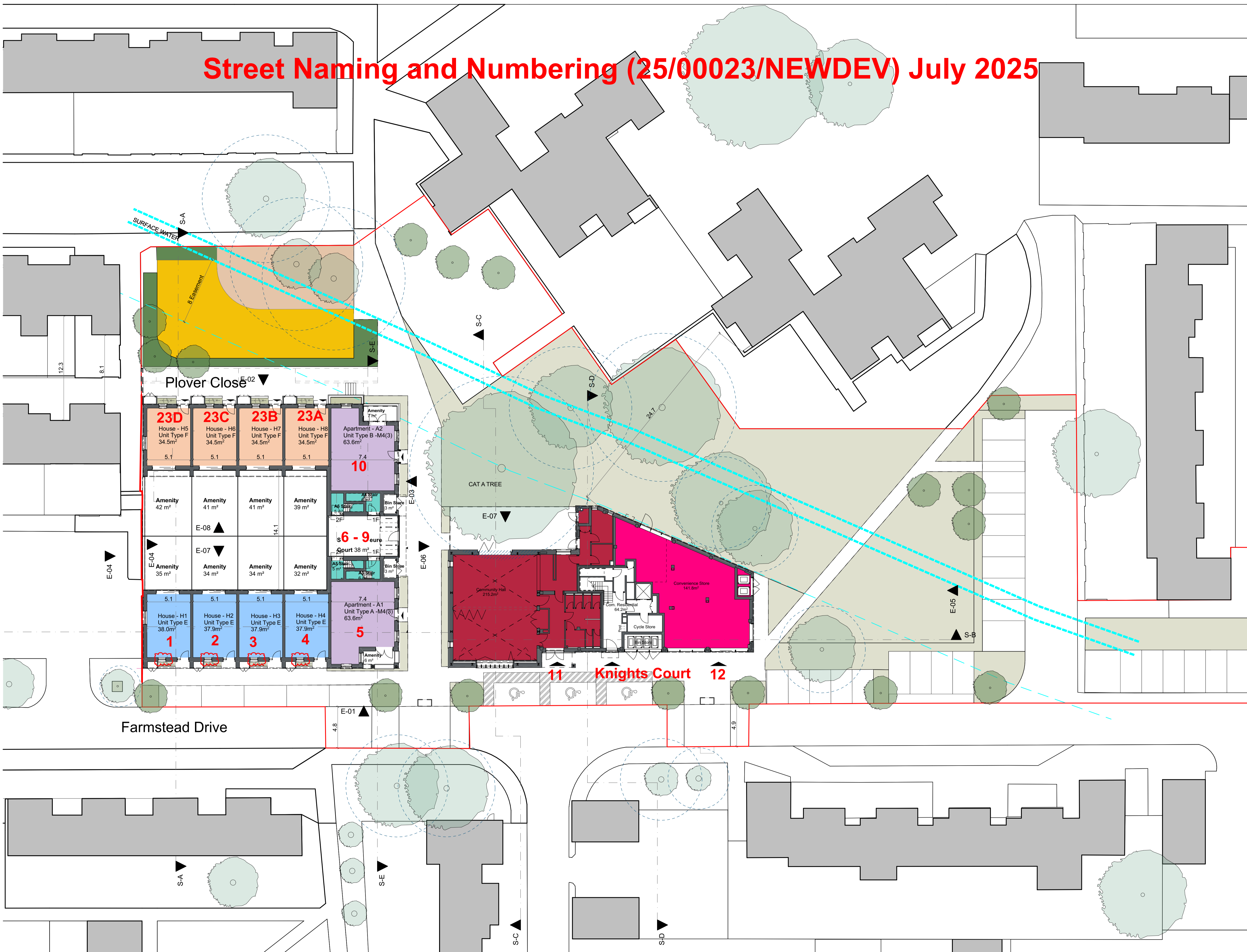


East Block

Occupancy	Unit	GIFA (m2)
1B2P	Flat - F1	50.7
1B2P	Flat - F3	55.3
1B2P	Flat - F4	50.7
1B2P	Flat - F6	55.3
1B2P	Flat - F7	50.7
1B2P	Flat - F9	55.3
3B4P	Flat - F2	81.2
3B4P	Flat - F5	81.2
3B4P	Flat - F8	81.2

West Block

Occupancy	Unit	GIFA (m2)
1B2P	Apartment - A1	63.6
1B2P	Apartment - A2	63.6
2B3P	Apartment - A3	74.7
2B3P	Apartment - A4	74.7
2B3P	Apartment - A5	81.0
2B3P	Apartment - A6	81.0
2B4P	House - H1	79.9
2B4P	House - H2	79.9
2B4P	House - H3	79.9
2B4P	House - H4	79.9
3B5P	House - H5	99.4
3B5P	House - H6	99.4
3B5P	House - H7	99.4
3B5P	House - H8	99.4



S2 P02 01/11/2024 ES DC05 - Window moved on Unit Type E to accommodate the reduction of GF WC to M4(1) standard and associated reconfiguration.
 S2 P01 19/06/2024 AJ Issued for Planning
 Stat. Rev. Date Init. Revision Notes



lsi ARCHITECTS

NORWICH
 The Old Drill Hall
 23a Cattle Market Street
 Norwich NR1 3DY
 +44(0)1603 660711

LONDON
 Floor 2
 50-54 Clerkenwell Road
 London EC1M 5PS
 +44(0)20 7276 1739
 www.lsiarchitects.co.uk

Client
 Oakwood Building Contractors Ltd
 Project
 Farmstead Drive, Edenbridge
 Title
 Proposed Plot Layouts
 Proposed Ground Floor Plan

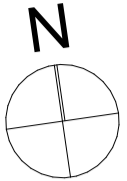
Scale @ A1 1:200	Date 19/06/2024	Drawn AJ
Purpose of issue Issued for Information		
Drawing Code 22216-LSI-FSD-00-DR-A-1310	Status S2	Rev. P02

AMENDMENTS KEY

- 1 Community Hall roof pitch altered from 15° to 17°.
- 2 Community Hall ventilation louvres added to north elevation.
- 3 Community Hall WC layout altered.
- 4 Convenience Store shop front glazing reduced to north & east elevations.
- 5 Stone surrounds to windows replaced with brick reveals and pre cast cills.
- 6 Sedum roof to be replaced with single ply.
- 7 Rear folding sliding doors to houses changed to sliding doors.
- 8 Parapet coping stone to be replaced with a course of reconstituted stone and PPC aluminium coping.
- 9 Maisonette canopy reduced in size.
- 10 Soldier band to East Block retained but no longer projecting.
- 11 Balcony depths increased.
- 12 Glazing alterations to West elevation of Community Hall.
- 13 Basement to East Block omitted.
- 14 Lift overrun revised.
- 15 Windows reduced to incorporate raised cill.

Residential Unit Type

- 1B2P
- 2B3P
- 2B4P
- 3B4P
- 3B5P

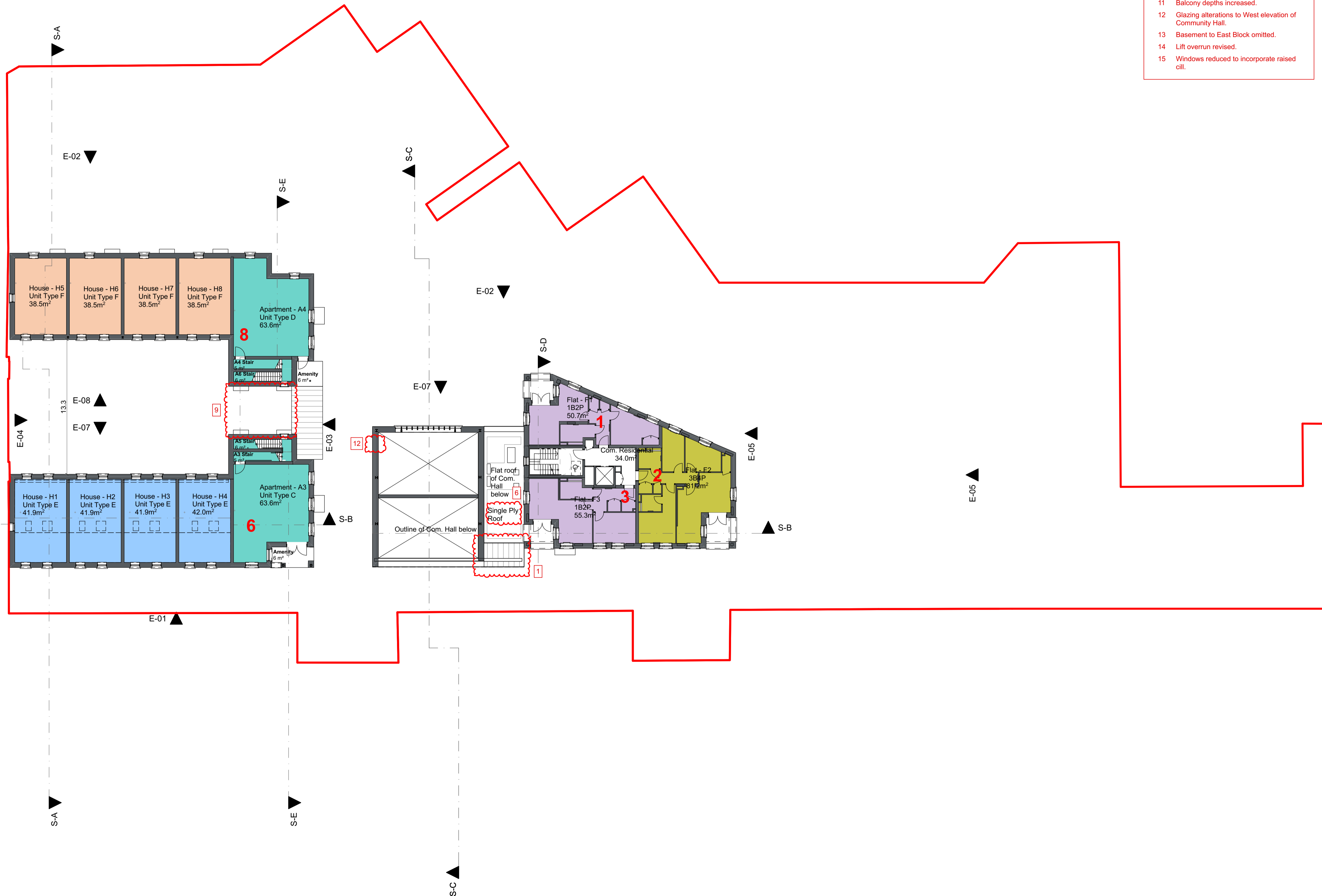


East Block

Occupancy	Unit	GIFA (m2)
1B2P	Flat - F1	50.7
1B2P	Flat - F3	55.3
1B2P	Flat - F4	50.7
1B2P	Flat - F6	55.3
1B2P	Flat - F7	50.7
1B2P	Flat - F9	55.3
3B4P	Flat - F2	81.2
3B4P	Flat - F5	81.2
3B4P	Flat - F8	81.2

West Block

Occupancy	Unit	GIFA (m2)
1B2P	Apartment - A1	63.6
1B2P	Apartment - A2	63.6
2B3P	Apartment - A3	74.7
2B3P	Apartment - A4	74.7
2B3P	Apartment - A5	81.0
2B3P	Apartment - A6	81.0
2B4P	House - H1	79.9
2B4P	House - H2	79.9
2B4P	House - H3	79.9
2B4P	House - H4	79.9
3B5P	House - H5	99.4
3B5P	House - H6	99.4
3B5P	House - H7	99.4
3B5P	House - H8	99.4



S2 P01 19/06/2024 AJ Issued for Planning

Stat. Rev.	Date	Init.	Revision Notes



lsi ARCHITECTS

NORWICH
The Old Drill Hall
23a Cattle Market Street
Norwich NR1 3DY
+44(0)1603 660711

LONDON
Floor 2
50-54 Clerkenwell Road
London EC1M 5PS
+44(0)20 7276 1739
www.lsiarchitects.co.uk

Client
Oakwood Building Contractors Ltd

Project
Farmstead Drive, Edenbridge

Title
Proposed Plot Layouts
Proposed First Floor Plan

Scale @ A1 | Date | Drawn
1:200 | 19/06/2024 | AJ

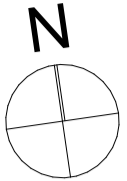
Purpose of issue			
Issued for Planning			
Drawing Code	Status	Rev.	
22216-LSI-FSD-01-DR-A-1311	SZ	P01	

AMENDMENTS KEY

- 1 Community Hall roof pitch altered from 15° to 17°.
- 2 Community Hall ventilation louvres added to north elevation.
- 3 Community Hall WC layout altered.
- 4 Convenience Store shop front glazing reduced to north & east elevations.
- 5 Stone surrounds to windows replaced with brick reveals and pre cast cills.
- 6 Sedum roof to be replaced with single ply.
- 7 Rear folding sliding doors to houses changed to sliding doors.
- 8 Parapet coping stone to be replaced with a course of reconstituted stone and PPC aluminium coping.
- 9 Maisonette canopy reduced in size.
- 10 Soldier band to East Block retained but no longer projecting.
- 11 Balcony depths increased.
- 12 Glazing alterations to West elevation of Community Hall.
- 13 Basement to East Block omitted.
- 14 Lift overrun revised.
- 15 Windows reduced to incorporate raised cill.

Residential Unit Type

- 1B2P
- 2B3P
- 2B4P
- 3B4P
- 3B5P

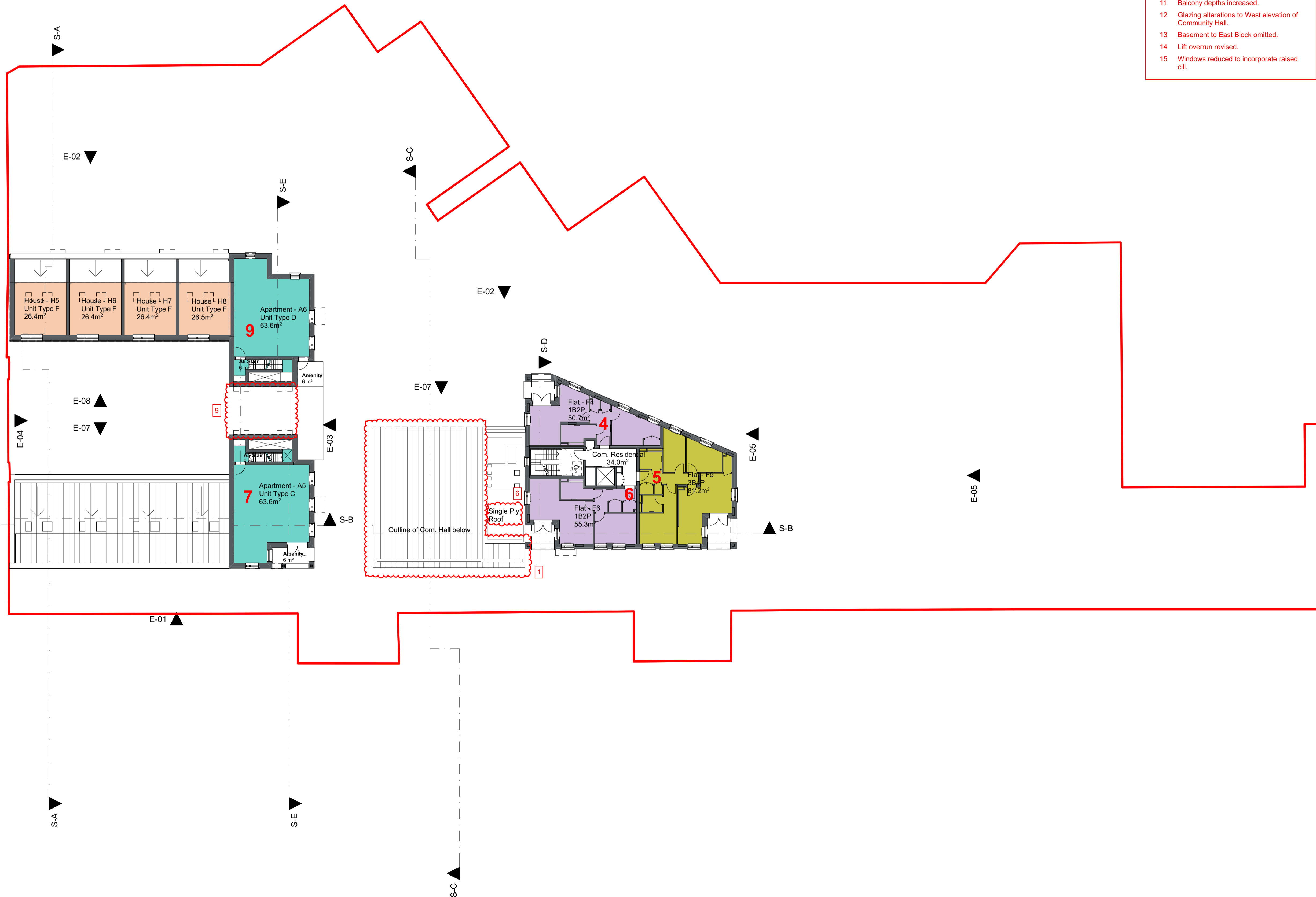


East Block

Occupancy	Unit	GIFA (m2)
1B2P	Flat - F1	50.7
1B2P	Flat - F3	55.3
1B2P	Flat - F4	50.7
1B2P	Flat - F6	55.3
1B2P	Flat - F7	50.7
1B2P	Flat - F9	55.3
3B4P	Flat - F2	81.2
3B4P	Flat - F5	81.2
3B4P	Flat - F8	81.2

West Block

Occupancy	Unit	GIFA (m2)
1B2P	Apartment - A1	63.6
1B2P	Apartment - A2	63.6
2B3P	Apartment - A3	74.7
2B3P	Apartment - A4	74.7
2B3P	Apartment - A5	81.0
2B3P	Apartment - A6	81.0
2B4P	House - H1	79.9
2B4P	House - H2	79.9
2B4P	House - H3	79.9
2B4P	House - H4	79.9
3B5P	House - H5	99.4
3B5P	House - H6	99.4
3B5P	House - H7	99.4
3B5P	House - H8	99.4



S2 P01 19/06/2024 AJ Issued for Planning

Stat. Rev. Date Init. Revision Notes



lsi ARCHITECTS

NORWICH
The Old Drill Hall
23a Cattle Market Street
Norwich NR1 3DY
+44(0)1603 660711

LONDON
Floor 2
50-54 Clerkenwell Road
London EC1M 5PS
+44(0)20 7276 1739
www.lsiarchitects.co.uk

Client
Oakwood Building Contractors Ltd

Project
Farmstead Drive, Edenbridge

Title
Proposed Plot Layouts
Proposed Second Floor Plan

Scale @ A1 | Date | Drawn
1:200 | 19/06/2024 | AJ

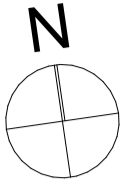
Purpose of issue			
Issued for Planning			
Drawing Code	Status	Rev.	
22216-LSI-FSD-02-DR-A-1312	SZ	P01	

AMENDMENTS KEY

- 1 Community Hall roof pitch altered from 15° to 17°.
- 2 Community Hall ventilation louvres added to north elevation.
- 3 Community Hall WC layout altered.
- 4 Convenience Store shop front glazing reduced to north & east elevations.
- 5 Stone surrounds to windows replaced with brick reveals and pre cast cills.
- 6 Sedum roof to be replaced with single ply.
- 7 Rear folding sliding doors to houses changed to sliding doors.
- 8 Parapet coping stone to be replaced with a course of reconstituted stone and PPC aluminium coping.
- 9 Maisonette canopy reduced in size.
- 10 Soldier band to East Block retained but no longer projecting.
- 11 Balcony depths increased.
- 12 Glazing alterations to West elevation of Community Hall.
- 13 Basement to East Block omitted.
- 14 Lift overrun revised.
- 15 Windows reduced to incorporate raised cill.

Residential Unit Type

- 1B2P
- 2B3P
- 2B4P
- 3B4P
- 3B5P

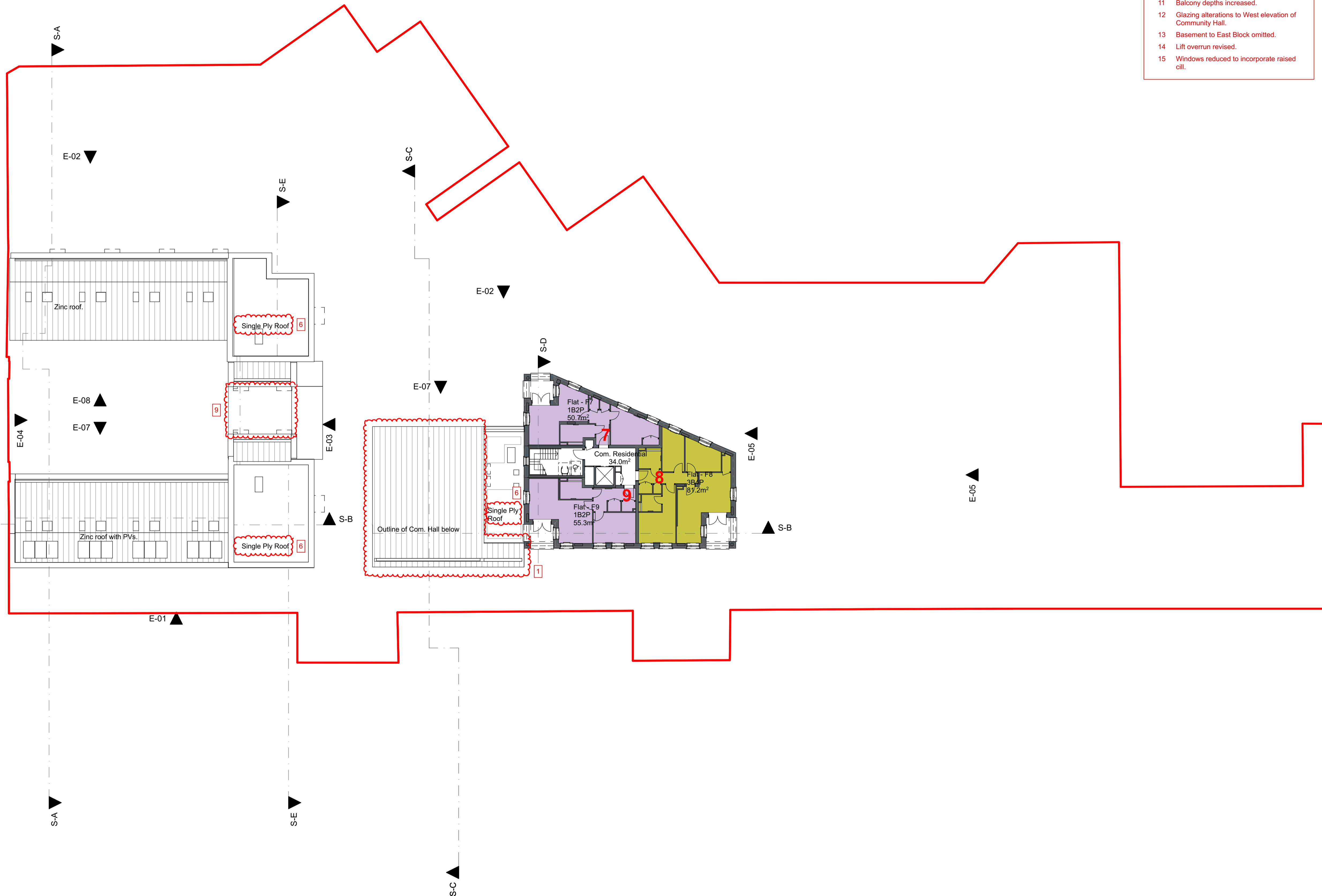


East Block

Occupancy	Unit	GIFA (m2)
1B2P	Flat - F1	50.7
1B2P	Flat - F3	55.3
1B2P	Flat - F4	50.7
1B2P	Flat - F6	55.3
1B2P	Flat - F7	50.7
1B2P	Flat - F9	55.3
3B4P	Flat - F2	81.2
3B4P	Flat - F5	81.2
3B4P	Flat - F8	81.2

West Block

Occupancy	Unit	GIFA (m2)
1B2P	Apartment - A1	63.6
1B2P	Apartment - A2	63.6
2B3P	Apartment - A3	74.7
2B3P	Apartment - A4	74.7
2B3P	Apartment - A5	81.0
2B3P	Apartment - A6	81.0
2B4P	House - H1	79.9
2B4P	House - H2	79.9
2B4P	House - H3	79.9
2B4P	House - H4	79.9
3B5P	House - H5	99.4
3B5P	House - H6	99.4
3B5P	House - H7	99.4
3B5P	House - H8	99.4



S2 P01 19/06/2024 AJ Issued for Planning

Stat. Rev. Date Init. Revision Notes



lsi ARCHITECTS

NORWICH
The Old Drill Hall
23a Cattle Market Street
Norwich NR1 3DY
+44(0)1603 460711

LONDON
Floor 2
50-54 Clerkenwell Road
London EC1M 5PS
+44(0)20 7276 1739
www.lsiarchitects.co.uk

Client
Oakwood Building Contractors Ltd

Project
Farmstead Drive, Edenbridge

Title
Proposed Plot Layouts
Proposed Third Floor Plan

Scale @ A1 | Date | Drawn
1:200 | 19/06/2024 | AJ

Purpose of issue		Status	Rev.
Issued for Planning		SZ	P01
Drawing Code	22216-LSI-FSD-03-DR-A-1313	Status	Rev.